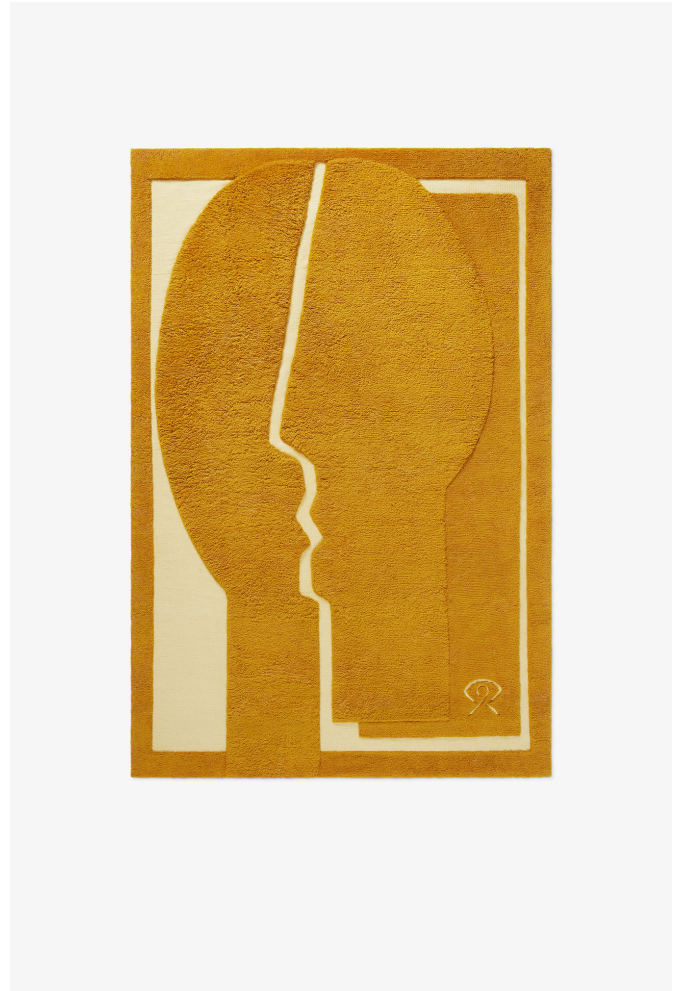


# NORDIC KNOTS



ARJÉ - FACE - 140X200

A collection of rugs designed by Bessie Afnaim Corral and Oliver Corral of ARJÉ. Combining the warm and vibrant Mediterranean aesthetic with the sharp, understated coolness of the Nordics. Merging old-world richness with contemporary minimalism. The motifs are inspired by the work of Cubist artists and their abstract and fragmented expression. Face, a shaggy design in a rich, sunny shade of warm ochre, represents the idea that every person carries a home within themselves, accessible only to them. The ARJÉ collection is handmade in small batches. Only a few in each size are available.

COLORS: Yellow, Brown, White

SIZES:

5'x8'

6'x9'

8'x10'

9'x12'

PRICES:

\$995.00

\$1,295.00

\$1,895.00

\$2,595.00